



Available in the USA from:  
**Rasmussen Gas Logs & Grills**  
info@rasmussen.biz  
800-782-1365  
www.radiantpatioheater.com

## TUNGSTEN SMART-HEAT

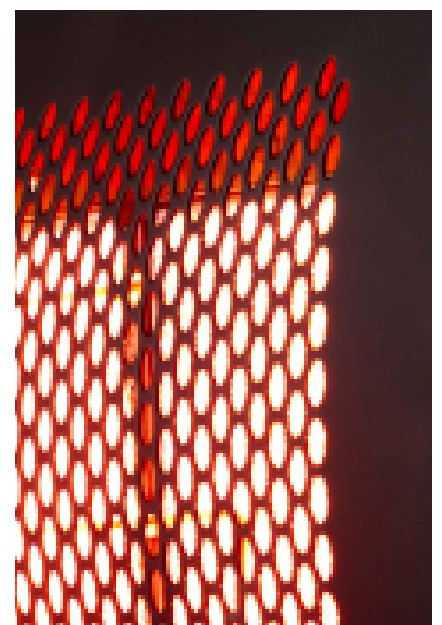
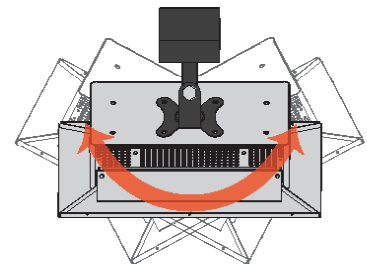
A designed, cost-conscious product blending aesthetics and function



A designed, cost-conscious product range that does not sacrifice aesthetics for function.

The patented direct ignition system, never before seen on an outdoor gas radiant heater, ensures a reliable start and effective operation, even in winds of up to 8mph.

Easy pivot arm provides greater positioning versatility and heat coverage.

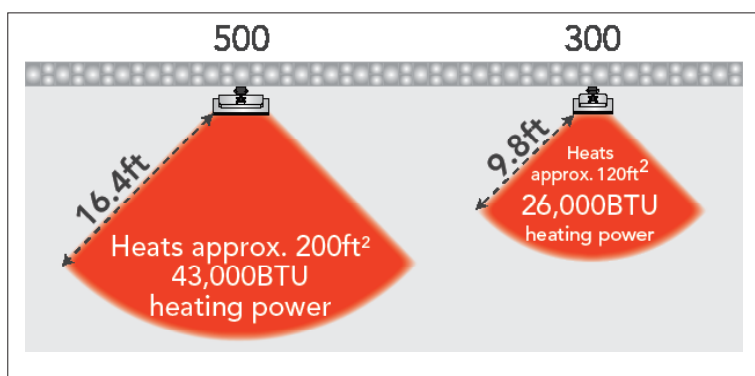


# TUNGSTEN SMART-HEAT

**BROMIC**  
HEATING

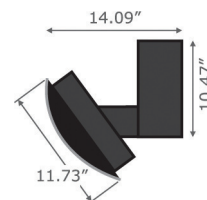
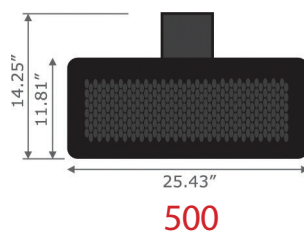
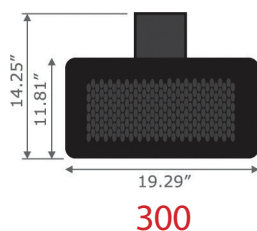
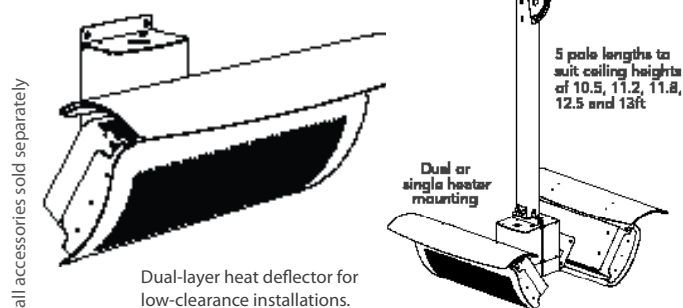
## FEATURES:

- Attractive black finish
- Universal bracket — easy upgrade from 300 to 500 model. No additional plumbing or wiring required.
- Bi-directional easy-pivot arm — 25° rotation each side.
- Electronic ignition — one or multiple units can be switched on and off simultaneously from a single remote-located switch.
- Automatic re-ignition — should the heater not re-ignite for any reason, the integrated "Flame Failure Safety Shut-off Control" turns the heater off immediately.
- Stainless steel casing — components are protected from tampering. Assists in preventing dirt and dust from accumulating on the wiring and components.



## ACCESSORIES\*

- Dual-directional ceiling pole
- Dual-layer heat deflector (See part numbers in table below)



SPECIFICATIONS			
Model		300	500
Part no.	LPG <sup>1</sup>	BR-TNG300-LP	BR-TNG500-LP
	Natural Gas <sup>1</sup>	BR-TNG300-NG	BR-TNG500-NG
Heat Deflector part no.		BR-2620165	BR-2620166
Ceiling Pole		5 pole lengths to suit ceiling heights of 10.5; 11.2; 11.8; 12.5' and 13'	
Heat Output (on LPG and NG)		26,000BTU	43,000BTU
Approximate area heated (feet <sup>2</sup> )		up to 120ft <sup>2</sup>	up to 200ft <sup>2</sup>
Gas connection		3/8" SAE	3/8" SAE
Electrical connection		110 Volt, 3-pin insulated plug	
Dimension (WxDxH)		19.29" x 14.09" x 14.25"	25.43" x 14.09" x 14.25"
Min. distance to combustible materials		Sides: 3' 6" / 1100mm	
		Above (to ceiling): 3' 6" / 1100mm	
		Above (to ceiling): 1' 2" / 1100mm	
Mounting height requirement to ground <sup>3</sup>		8' / 2438mm	8' / 2438mm
Weight (lb)		33lb	40lb

<sup>1</sup>Must only be installed by a licensed technician. Must complete "Pre-Installation Checklist" before installing. <sup>2</sup>The temperature will not exceed 65°C/149°F above the ambient temperature at specified distance. Please consult material manufacturer for temperature ratings and suitability. Bronic Heating takes no responsibility for material compliance. <sup>3</sup>8' / 2438mm or maybe lower depending on local regulations

## MINIMUM INSTALLATION CLEARANCES

